



Erudio Bio: Revolutionizing Biological Assays with Precision and Scale

Unleashing the Power of Molecular Interaction Data

Biological Assays Struggle with Scale and Accuracy

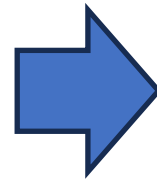
Data is expensive, so we make decisions with an **incomplete picture**



Limited, small-scale testing confirms diagnosis

Outcome only as good as the doctor's ability to deduce which tests to run, limiting the picture.

Cross Reactivity prevents larger scale testing



Comprehensive, large-scale testing will drive diagnosis without assumptions

Increased scale enables comprehensive testing and enhanced scientific discovery, leading to better patient care, reduced time to diagnosis, and cost reduction.

Starting the Revolution



More data

- Comprehensive data from a single biological sample
- Multiplexed analysis of nucleic acid, protein, cells and more
- MULTI-OMIC PLATFORM



Actionable data

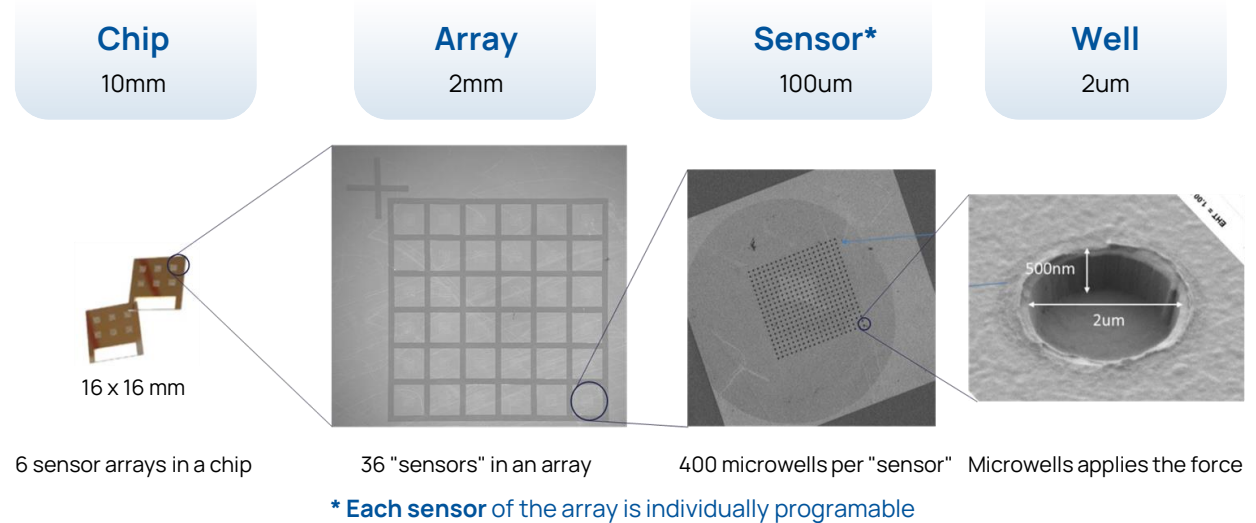
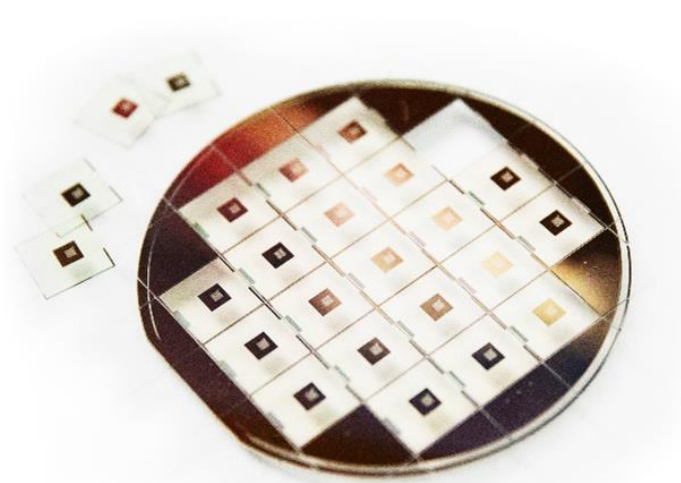
- Combined quality score from all data sources for comprehensive and conclusive assessment



Earlier data

- Complete data early to drive accurate decision making

Versatile Smart Assay (VSA) Platform



- VSA platform generates 1000x more data than the prevailing technology
 - Scalable **multi-omic** microarray sensor
- VSA platform indicates how good the data is in real time
 - Patented **dynamic force spectroscopy** and powerful Bayesian inference method gives our data a **quality score** to know their accuracy for actionable data
 - Quality score enables filtering of noise that enables accurate **multiplexing**
- VSA AI software extracts a detailed, interpretable picture for quick diagnosis
 - Can be combined with AI feature extraction
 - Leads to AI knowledge discovery
 - Results in data-driven diagnosis rather than diagnosis by deductions

Enabling Comprehensive Data Acquisition



Antibodies: Versatile Tools in Biology

- We can engineer to target (stick to) virtually anything we want
- But antibody also evolved to interact with many things

Problem:

- **The potential of indiscriminate interactions severely limits use of antibodies in multiplex formats**
- **Error-prone results due to non-specific binding**



Comprehensive Data with Force Spectroscopy

Solution:

- Force Spectroscopy gets comprehensive binding strength – a score to distinguish specific and non-specific binding
- This quality score discerns noise from useful data to enable multiplexing*

*Juncker et al., Current Opinion in Chemical Biology 2014, 18, 29-37

Joint Development for Rare Sample Application



上海市第一人民醫院
SHANGHAI GENERAL HOSPITAL
上海交通大学附属第一人民医院
上海市红十字会医院



Shanghai General Hospital's National Clinical Research Center for Eye Diseases

- JDA in draft stage for
 - Multiplexed eye disease dx – low sample volume and NSB ridden
 - **Current multiplexing solution on incumbent platform not satisfactory**

Hospital part of large medical care system

- 45 Mega hospitals in Shanghai with **83M** patient visits per year
- Leading the smaller hospitals in Shanghai for subsequent 280M patient visits

Globally unique partner, a customer so large that it is a market by itself

Erudio Key Milestones



IP developed at Stanford School of Medicine under mentorship by father of microarrays: Dr. Ronald Davis



Data vetted by \$115B Market Cap Semi-Company Analog Devices and Harvard Medical School/Mass Gen by multiplexed detection of cytokines in human serum



Resulted in commercial partnership with Analog Devices to manufacture at scale



Establishing an ongoing pilot program with the Shanghai General Hospital's **National Clinical Research Center for Eye Diseases**: a customer with a specific use case for Erudio platform. (Pilot customer contributing equivalent \$1MM to develop)



Goal of adoption at high scale with the hospital operator (83M annual outpatient visits) - Integrate into their high throughput assay workflow: Roboticized laboratory



Stanford
MEDICINE



HARVARD
MEDICAL SCHOOL



ANALOG
DEVICES



ANALOG
DEVICES

Taking Biological AI to the Next Level



With Erudio's scale, we will generate Data

Scaling up with a hospital with 83M patient visits results in massive amounts of data – resolving the data readiness in today's medical AI



Erudio AI improves outcomes – Feature extraction

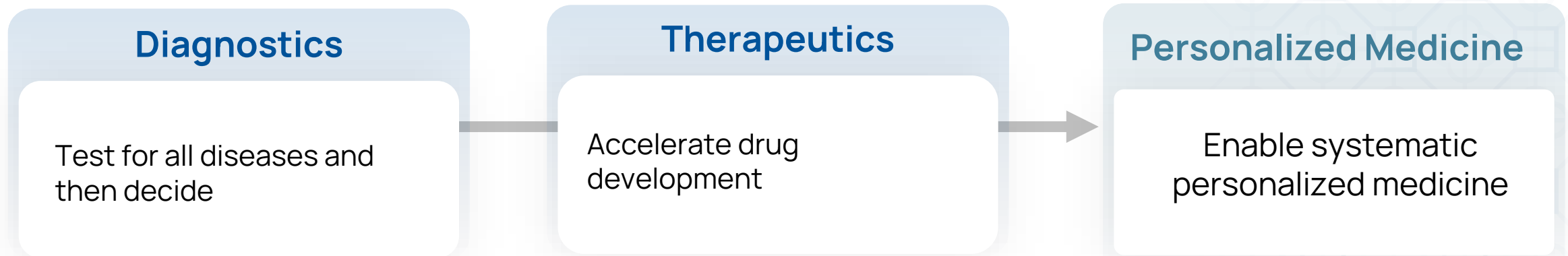
Curate new data to fit existing workflow and recognize actionable features from new data for optimal use of managerial, physician or scientist time and infrastructures.



AI to dominate the future – Knowledge discovery

Analyze and extract the hidden patterns and information from the massive biological data for knowledge discovery

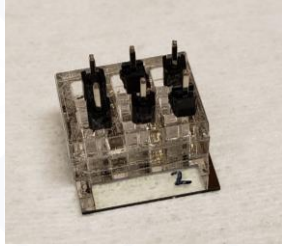
The Real Prize: Personalized Medicine Needs Concurrent Path



**Paving the path to personalized medicine
drives Erudio's go-to-market strategy**

<https://www.ncbi.nlm.nih.gov/pmc/articles/PMC5873736/>

Erudio's Business Model



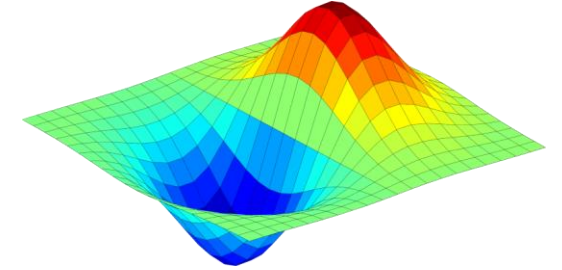
Consumable chip
& flowcell



Instrument



Consumable
reagent kit



Software
AI/ML & SaaS



VSA platform



Instrument: Recurring revenue with high margin (70%*) razor/blade:

- Single use consumable + Reader



Modular licensable software: AI based data interpretation and feature extraction



SaaS

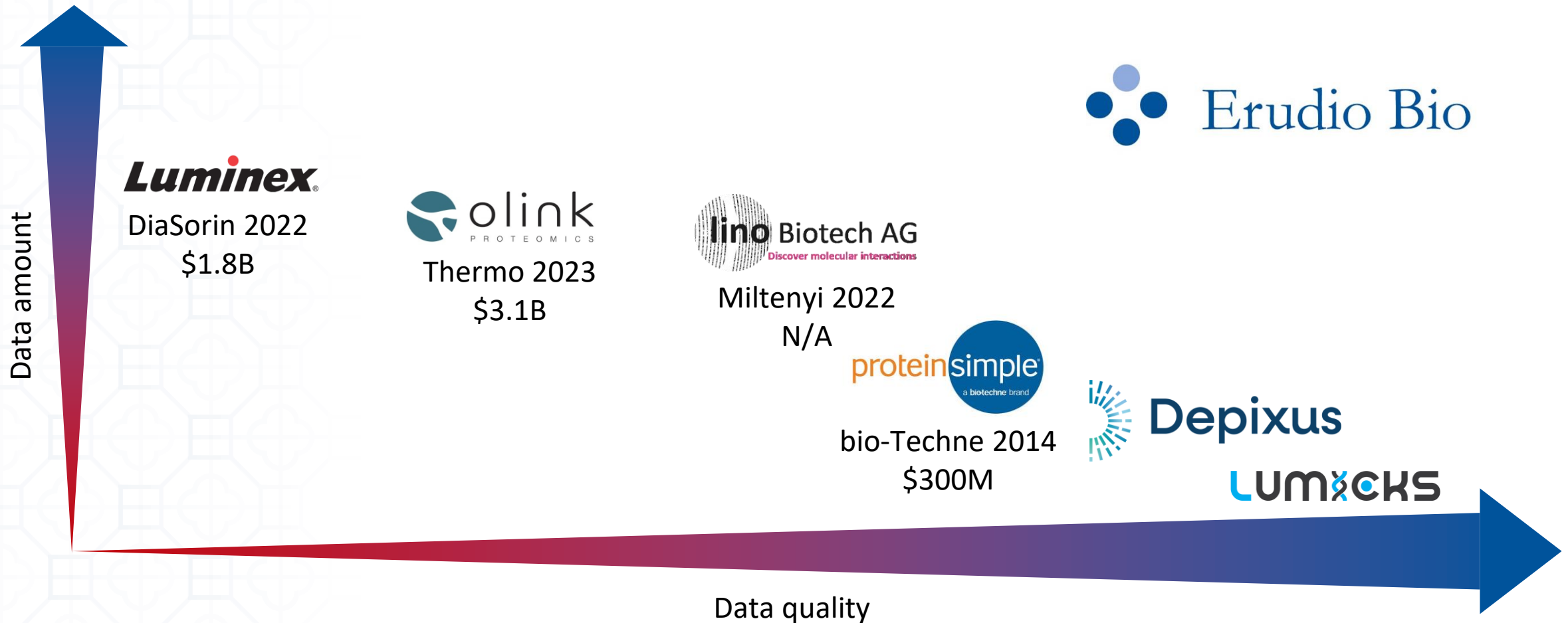


Subscription based pre-validation of reagent database



AI Knowledge discovery

Competitive Landscape



Erudio's VSA platform is the only one that provides both high quality data and large data output. Efficient workflow integration facilitates customer adoption

Team

Kee-Hyun Paik, Ph.D.

Chip, Microfluidics and Instrumentation

Susanne Baumhueter, Ph.D.

Biology, Immunology and project management

Sunghee Yun, Ph.D.

Artificial Intelligence, optimization and Software

Leon Chen, MBA, CFA

Business Development, Product, and Operations

Genentech



Stanford
Computer Science

Stanford
ENGINEERING



Stanford
MEDICINE

USC Marshall
School of Business



Advisory Board

Michael Cola

CEO AEVI Genomic Medicine, President of Shire plc. (\$62B sale to Takeda)



Tim Germann

CCO Carterra Bio



Karyn Eliot

Retired CIA Sr. Executive



Ronald W. Davis

Prof. Biochemistry and Genetics,
Director Stanford Genome Tech Center
\$15B+ exits






William J. Greenleaf

Prof. Genetics and Applied Physics,
Stanford University



Seed Round

Erudio Keystones

-  Technology already works
-  Identified a pilot customer willing to joint develop product
-  Partner in place ready to scale

**Raising Seed Capital to finance build out of pilot program with
Shanghai General Hospital**

Pilot program use case highlights Erudio's strengths

**Significantly faster than other seed stage startups with clear,
well defined execution path**

Capital Efficient